



# Tags Swipes

## Harmony on the Sound Gets Media Coverage on Stage 8 - WTNH.com Regarding Global Open House



# News from...



**Wendy Davies**



**Ruth Widerski**



**Leslie MacDonald**



**Carolé Mensing**

## Regional Management Team Email Addresses

Wendy Davies	Team Coordinator	w.davies@sympatico.ca
Ruth Widerski	Finance Coordinator	bariten1@yahoo.com
Leslie MacDonald	Communications Coordinator	jlesliemacdonald@hotmail.com
Carolé Mensing	Education Coordinator	cm17av@aol.com
Julie Jeffery	Directors' Coordinator	julieajeffery@gmail.com
Patti Laverneich	Events Coordinator	eplpfl@snet.net
Jessie Oslán	Marketing Coordinator	jessiebass2000@yahoo.com
Deb Richard	Membership Coordinator	DebRichard@maine.rr.com

**THEY WANT TO HEAR FROM YOU**



### Core Values

Camaraderie, Musical Excellence, Personal Growth, Professionalism, Open Communication

### Strategic Goals

- Provide quality education to enhance musical excellence and leadership
- Promote regional leadership excellence and develop new regional leaders
- Assure financial security
- Maintain membership (retention) and promote membership growth
- Assist Sweet Adelines International in creating a vision for the far future (15 years)

# Your Regional Management Team (RMT)



**Julie Jeffery**



**Patti Lavernoich**



**Jessie Oslán**



**Deb Richard**

## Education Coordinator

**Carolé Mensing**

Region 1 is welcoming in the NEW Year together here in Newton , MA, at our first 2013 regional weekend! We are also welcoming our guest faculty- Dede Nibler, from California, our International Faculty,Gail Jencik, our Region One faculty, and ..... we have three guest faculty presenting topics of interest- Eileen Goie, Steve Wolff and Jennifer Winston. What a fabulous way to spend a weekend in New England!

Education is such a vital component of our hobby. This year we continue to have the opportunity for guest faculty to be in our region.

Kim (Hulbert) Vaughn (QUEEN, Director, San Diego) at RQA weekend August 3, Sandy Marron (QUEEN, Director of Lions Gate) and Judy Potzgay ( Quartet top ten, Choreographer) for Fall regional in Nashua.

Attending regional weekends, competition, and regional shows and events, help all of us become better performers, singers. Plan ahead, and keep your calendar updated with all the excellent Sweet Adeline events offered.





## Finance Coordinator

**Ruth Widerski**



I hope everyone had a nice holiday season and all your choruses are back in the swing of rehearsing after the holiday break. Getting back into the swing also means doing so on the business side. Part of my job as Finance Coordinator is to track dues payments made by the chorus finance coordinators, but I also track dues payments by our Chapter-at-Large (CAL) members.

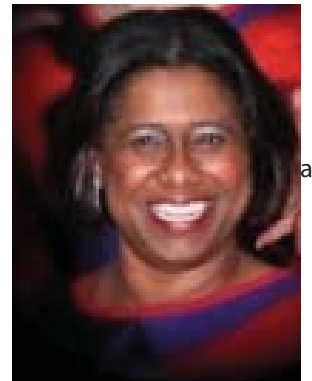
In recent months we've had some activity on our CAL list, and that's both good news and bad news. The bad news is that some members are leaving our choruses, but the good news is that they are staying as CAL members. However, in the process, I've noticed some confusion about dues for CAL members, so I thought I'd explain our regional dues structure.

If you are a member of a chorus, the regional dues for over age 25 members are \$45 per year. Youth members pay \$30 per year. These dues are collected by the Chorus Finance Coordinators/Treasurers and then paid to the region on your membership anniversary. If you change your membership to CAL then there is an extra \$10 due in the year you switch and thereafter the dues are \$55 (\$40 for Youth members). When you are CAL, there is an extra expense to the region to print and send notices of regional activities and we need to recoup that expense. Similarly, there is an extra \$10 due to SAI for your International dues as they have similar extra expenses for CAL members. So if you switch to be a CAL member, bottom line is that dues are an extra \$20 per year, \$10 for the region and \$10 for SAI.

I send out invoices with the amount due and CAL members send their payment to me. However, CAL members are responsible for going online to the SAI website to pay their International dues. I send a note to remind people to do that, but for anyone who has always been a chorus member this is something you will need to take care of if you go Chapter-At-Large. I'm addressing this purely from a Finance perspective but if you have any questions about membership status not related to money, please contact Deb Richard, our Regional Membership Coordinator

## Marketing Coordinator

**Jessie Oslán**



Happy New Year - I hope you enjoyed the holidays and are refreshed and ready to start the new year off with a bang! It's exciting to see Region One choruses on Meetup.com. These choruses are getting results – visitors are coming through the door, becoming members and the choruses are gaining more visibility to their target audience. RNH had several visitors from meetup.com and few have already become members! MVC has also gotten several visitors from their newly established site. I encourage each chorus to add this resource to their marketing/membership tools. Marketing and member recruiting is a year round effort as our membership numbers fluctuate throughout the year. Getting new members throughout the year will help combat member attrition. SAI is asking choruses to participate in 2013 Global Open House after the success of the 2012 program. From planning to implementation, there are prepared materials, resources and plans ready for your use. I know it can be challenging for our region to run full-blown membership drives during the winter, but you can certainly adapt the program to suit your chorus' needs. Check out this link to find out more: <http://www.sweetadelineintl.org/index.cfm?id=304>

The Regional Management team is dedicated to keeping our members abreast of the happenings in our region with our monthly Region 1 Happenings e-newsletter and the Tags & Swipes newsletter. Don't forget to visit our website at:

<http://www.sai-region1.org/> as we continue to add and update information, including information on regional weekends and contest. We have a "Classifieds" section for your use to advertise for new quartet members needed, risers needed or in surplus, costumes for sale, etc. and we would love to receive action shots of your group for our front page! Please don't hesitate to contact me at: [marketing@sai-region1.org](mailto:marketing@sai-region1.org) if you have any questions or want to share your marketing ideas with the region.

Membership is the responsibility of everyone.

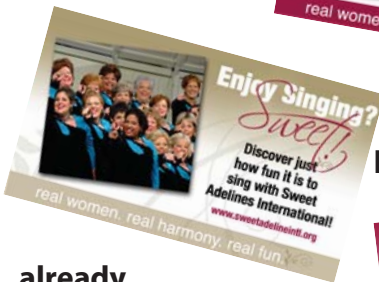
Global Powerhouse in 2013  
Campaign Period:  
Jan 1 - Dec 31, 2013



International is "Sweetening the Pot!"



Membership begins with Me!



Most of you have



Invite a Friend  
Use one of these designs (that have already been created for you by International) to invite your friends by email. Professional results in only a few clicks!



already

been involved with the Global Open House in the month of January.

### Membership Incentive Program

If you are directly responsible for adding new members you will be compensated as follows:

- Add five members in one year - get free dues for a year (\$90 value)
- Add 10 members in one year - get free dues for two years (\$180 value)
- Add 15 members in one year - get free dues for two years and be recognized in The Pitch Pipe (\$180+ value)
- Add 20 members in one year - get a free three-year membership and be recognized in The Pitch Pipe (\$243+ value)
- Add 25 members in one year - get a complimentary brick on international's brick patio, a three-year membership, be recognized in The Pitch Pipe and be acknowledged at International Convention (\$343+ value)

Tags & Swipes will be keep you up to date on where the action is!



real women. real harmony. real fun.

Invite a Friend - <http://www.sweetadelinesintl.org/index.cfm?id=81>



# Chorus Lines



## Berkshire Hills

We had a very busy and rewarding holiday season! After performing for residents in the Alzheimer's unit at Kimball Farms, we stopped and sang a few songs for 4 couples in the dining room. They gave us a standing ovation and said we made their day! One lady kept crying, told us we were wonderful, and said she was a member of Sweet Adelines a long time ago. Our new members were very touched by all of this.

This fall, our outgoing chorus manager, Janie Pellish, brought in 3 enthusiastic new members--Tamara Hitchcock, Nicole Harrington, and Marsha Cohen. Leslie Murray joined us after recently returning from Greece after 15 years living abroad, and Sarah Cicchetti, a high school student, has also joined our group. Leslie found us on the web, and Sarah saw it in the newspaper. They all learned our holiday music in a short time (off paper)!

We were part of the second annual Lenox Caroling Festival along with 7 other choral groups. We sang outside at two different venues and were judged, and also voted on by spectators on a misty morning in December. In the evening, each chorus sang 2 songs and then the winners were announced from among high school students, college students, and the general population. We placed third with the judge's votes, but lost the popular vote. We were hoping to win the monetary prize attached, but had a great time and acquired some new followers!

We performed at nine locations this season including the Beacon Theater lobby, Berkshire Medical Center tree lighting and on the units where a woman was celebrat-

ing her 100th birthday, senior apartments, nursing homes, and a ladies guild! Most enjoyable!

We may have a new director by the time this reaches the press. In the meantime, our assistant director, Gail Wojtkowiak, is doing a great job!!

**Pam Basinski**

We are about to launch our exciting new website created by our coach and friend, Ken Hughes who directed our chorus on the competition stage in 2011. Watch for it!!!!

**Happy New Year to all in Region 1!!**

**Carole Harsh**

## Champlain Valley

The Chorus has been very busy over the



**A Christmas performance by Champlain Valley at a local nursing home**

holiday season. Starting on December 1 we sang at churches, schools, nursing homes, holiday parties and at our own Christmas Concert. That event was shared with the local men's barbershop chorus and included the first public performance by Notes of Accord, the newest registered quartet from our chorus. They were outstanding! We are looking forward to participating in the Global Open House sponsored by SAI with our own open house on January 9, 2013.

## Cranberry Shores

Fall regional, with Jim and Rene, had so much to offer! We were thrilled to sing among our peers on Saturday night, and happy to see Rene enjoying the show in the audience!

In September, we sang in Eastham at their annual Windmill Weekend. November brought us to the Barnstable Senior Center

for a performance, and to the Brewster Tree Lighting. Yarmouth Newcomers Club welcomed us for a December concert as did the Brewster Elders. Other holiday concerts included a performance at a church luncheon in Brewster, and a garden club celebration in YarmouthPort. Despite the rain during the Hyannis Christmas Stroll, we were welcomed in to sing by restaurant and business owners along the way! Our annual winter concert, hosted by the town library, was in Marston Mills. We had a full house, complete with singing Girl Scouts and delicious cookies! It was a lot of fun as the audience participated, with song and mime, in a rendition of The Twelve Days of Christmas!

Over the last several months, we have been fortunate to have excellent coaching sessions with Laura Pienkowski, Karen Rourke, Gail Jencik and Ann Gooch.

The New Year brings us excitement as we look forward to competition. We continue to work hard at perfecting our craft under the careful guidance and encouragement from our Director and Assistant Director.

We are so happy to welcome new member Joan Craig with her beautiful lead voice! We also wish our own 2009 Marge Bennett Angel Award recipient, Sara Walden, best wishes for a fun packed future as she pursues travel and other fun adventures and becomes an Associate Member. It will never be the same without Sara's beautiful smile and persona on the risers every week!

Hope to see you at Winter Regional in Newton!

**Patti Corbett**

---

## Farmington Valley Chorus

Didn't you just love high school?

Farmington Valley loved it so much we couldn't wait for our Miss Portley's School For Girls Class Reunion on December 8th at Canton High School. Can you imagine Cathy Saunders going to an all girls high school? Bah ha ha ha! Okay maybe not, but this was her vision for our very successful show this year called "Class Act". The chorus entertained the packed auditorium

with this cleverly written show for the first half. The second half featured the newly formed Off Kilter quartet, On Tap, the Canton High School Chamber Singers and the Yale Alley Cats. Heidi Zacchera even got to perform with Encore at the very school where she teaches. We didn't hear any jeers from the students in the crowd so she must be a good one. A fantastic evening of barbershop and four part harmony that continued over at LaTrattoria Restaurant in Canton where we were most graciously welcomed with hospitality and great food for our Afterglow. More singing and laughing ensued with another guest quartet - High Five from Harbor City Show Chorus in Maryland. Carol Wilson is their bartone and sings baritone on the risers with Harbor City and Farmington Valley. She's a busy lady - both of her choruses are going to Hawaii. She's going to be even busier.

We were strolling carolers for the holiday season at Harwinton's Holiday Festival. We strolled to the library, sang carols outside and inside, then we strolled to Town Hall where we made sure we sang inside - it was darn cold, but fun for the 17 of us. It's so rewarding every time we do these performances. People you've never seen before stop you in the grocery store days later to tell you how wonderful you sang. Now that's the best way to spread Christmas cheer!

The show for 2012 is over so we're Hu-Ke-Lau-ing into 2013 while concentrating on our contest songs for Hawaii, scheduling plane flights and hotel rooms and who's rooming with who and is that "my lei you're wearing", or "whose coconuts are those?" etc. It's going to be WILD. We've got performances in February and March and contest to sponsor in April as well. Life couldn't be more exciting. We've got Vicki Maybury, Harriette Walters, Joe Connely and Diane Porsche all willing to help lead us into this dance. And we've got three new members and some returning sisters-in-singing ready to join in the fun. 2013 is looking to be awesome for Farmington Valley.

Hauoli Makahiki Hou - means "Happy New Year" in Hawaiian. May it be a grand and glorious one for us all!

**Nancy Propfe**

---

## Greater Montreal Chorus

Greater Montreal Chorus has had a very successful Fall season. In September, we organized two membership evenings, and gained several new and motivated members. Next was an educational and instructive coaching session with Marion Devokaitis. We enjoyed her time with us, and are grateful for her insight and teaching toward our musical way forward.

In December, we put on a very successful Holiday Show, under the direction of our leader Heather Solomon, with help from our two assistant directors, Marilyn Perrin and Sandy Hutt. The star of the show was THE GRINCH! We had a full house, made some extra money from an accompanying bake sale, and had a wonderful time performing. We are looking forward to a great musical year ahead in 2013.

**Shira Karpati**

---

## Heart of the Valley

Autumn found the HOV sisters broken hearted over the departure of several treasured members, and left some of us wondering how we would go on without them. Spirits were falling along with the maple leaves,

And then, SURPRISE! Some wonderful new women astonished us and brightened our autumn recession by wandering into our rehearsal, their own lives in need of long lost singing. Each Googled: singing western mass and found our website! All three are now captivated, and have mentioned over and over how welcoming and warm our collection of singers are. That first

walk in the door and the feeling a visitor receives from the group is a powerful force. Especially noted by our current newbies was the hand written note from our Director Maggie that they receive in the mail after their first visit.

Meanwhile, our other newbie, who joined last spring, was trying to keep the anxiety at bay as she tackled the rep and then saw the Holiday music roll out. It was enough to make one run for the hills. That's where the "buddy" presence steps in and calms a newbie's nerves.

September found us, as always, making fried dough for the Belchertown Fair. It is a very important event requiring all hands on deck because it is our biggest fundraiser. This year, the late September weekend presented us with perfect weather and a cool \$5,000 for the coffers. Hard work, no doubt about it, but worth it in every way. Hats off to our calm cool and collected organizer, Judy Rivard, for chairing this important annual money maker..... Breaks found the gals munching on Maple Cotton Candy and taking advantage of the church's Taco Dinner (Yum Yum), while others wanted a good old hamburg and fries. All were readily available.

Two performances at local Assisted Living residences this fall brought smiles and pride to many who attended and participated in our themed "Let's Go to the Movies" routine. Each song was introduced with a few facts and an invitation to guess the next song. The majority of songs were guessed correctly, setting an exciting and positive tone for the performance, and which energized the performers to the max.

In November our worldly presence was fortified when Maggie debuted our Heart of the Valley FACEBOOK page. We'd love it if you would visit it soon and "LIKE" us. <https://www.facebook.com/#!/pages/Heart-of-the-Valley-Chorus/100543376769189?fref=ts>

Fingers crossed, we hope it will provide more visibility and bring more singers to us. Seasonal performances included a Whole Foods supermarket (who knew?), a Holiday

dinner gathering at the Florence Community Center, and Carol strolling (while passing the hat for the local homeless shelters) in downtown Northampton. Our final 2012 event took place at Cooley Dickinson Hospital, where we popped around to different floors and locations to serenade staff and patients – including a newborn baby and her family. As always, we went everywhere prepared with cards and fliers, ever on the lookout for potential new singers to join us in this very happy pastime.

**Christine Nolan**

---

## MetroWest Harmony Chorus



## WELCOME JULIE!

We have been blessed to welcome our new director, Julie Jeffery, who has graciously and wonderfully stepped up to the plate as our new director. No one could imagine how happy we all are to have her. Her knowledge, demeanor and skill set have given us a new life as a chorus.

We were privileged to receive an invitation to the Coastline Show Chorus' inter-chapter Christmas party in Attleboro. Needless to say, a good time was had by all. We had a chance to sing to a very gracious audi-

ence with a standing ovation despite not having the chance to warm up. It was a truly wonderful experience to hear the various groups present, especially the younger ones, who brought a level of wonder to the magic of the evening.

We hosted our own party the following week in our rehearsal hall. We always seem to have enough food to feed a small army. Heather Goodwin did an outstanding job of coordinating the Yankee swap and the games we played. Many thanks, Heather.

May the new year bring everyone happiness and success as we look forward to the coming events in our journey.

**Peg Forget**

---

## Profile Chorus

**Greetings, Region One,  
from the Profile Chorus!**

The Christmas season has been a busy time for Profile, and we had plenty of opportunities over the past few months to share our love of singing with numerous audiences in varied settings. Some places were repeat venues but have become personal favorites!

At the Nashua Stroll in November, we performed at City Hall, right in front of a large staircase (which came in quite handy, since we didn't have the benefit of our risers). Our wardrobe of bright red sweaters, ball ornament earrings, and sparkly reindeer stickers helped contribute to the festive atmosphere. We invited several ladies from our recent guest program to perform with us, and I think they really enjoyed themselves. The audience was sizeable and most appreciative of our show, which included several sing-a-longs so they could share in the fun!



In December, Profile returned to Strawberry Banke in Portsmouth for the annual Candlelight Stroll. This is truly one of the loveliest places in all of New Hampshire, especially when a light blanket of snow falls and creates a magical environment. Our group never tires of singing in a real winter wonderland as it always ignites our Christmas spirit. Warming up afterward with homemade soup, chili, and hot chocolate at Stoodley's Tavern is also an integral part of the experience!

Two brand-new venues for us this year were the Merrimack Outlets in Merrimack, and the Hampstead Holiday Tea at the Hampstead Library. Our quartets, Queen City Harmony and Musicality, were also performers at both events. We greatly enjoyed the warm reception we received and hope to perform for both of them again next year.

It never fails to amaze me when I realize that another year has rolled on by. Writing articles for Tags & Swipes means that a

Regional event is imminent, and I look forward to seeing you all then.

**Happy 2013, everyone!**

**Deanna Dean**

---

## Royal River Chorus

As we ring in the new year, we'll take a moment to reflect on our past 12 months.

Last year at this time, we were getting ready to participate in the first SAI Global Open House. We picked a date, made posters, publicized it and assigned all members to some part of the evening event.

Then we got hit with a treacherous snowstorm that postponed the event into February! We went through with it all and had a fun time with our guests, but we didn't get the number of people or prospective members we'd planned for.

A year later we are repeating our efforts and hope this time the weather cooperates!

In March we held a seaside retreat at Oceanwood camp with coach Joan Bouteiller (Tenor of the Quartet Champion The Four Bettys). She is a bundle of energy with a prodigious knowledge of the barbershop style.

We felt fortunate to have her work with us before contest. Retreat weekends always provide great opportunities for chorus members to bond with one another, of course, and this one was no exception.

Regional Competition was highly anticipated this year, as three of our closest competitors were not competing. We talked a lot about the prospect of winning, and we feel we gave our best performance, but the blue ribbons eluded us once again. Disappointing, yes, but we are happy for Farmington Valley Chorus getting to have this tremendous experience

... and in the end, relieved that the significant effort of funding the trip to International in Hawaii is off the table for us this year.

As Fall Regional approached, we looked forward to a session with our Coach, Jim Arns, who was the weekend faculty along with his Melodeers choreographer and new International President, Renee Porzel.

Renee and Jim are an amazing teaching duo, opposite as they are, to the benefit of all learning styles. They easily teach all categories of the barbershop craft with such passion that you can't help but get fired up!

Capping off a stellar coaching year was a first-time visit by Dale Syverson. She is particularly great at explaining things you may have heard before but in a different way that really clicks!

Director Wendi McPike has meticulously compiled all the notes from our coaching seasons this year. Each chorus member is taking personal responsibility to incorporate what she needs to improve her

musical product.

Administratively, our team and Wendi began working with Jan Carley, "The Inner Coach of Barbershop" this summer, to assist us with goal-setting.

Each chorus member completed a lengthy survey and now we are processing the compiled results. Wendi is working with Jan individually on her goals as well

We end the calendar year with memories of performances that brought smiles and some tender tears to listeners of all ages.

We had a chance this summer to share the stage once again with our male counterparts, The Downeasters, for a memorable performance at the Old Orchard Beach Pavilion.

Last month we took part in the Harraseeket Grange Christmas party, an event unlike any we'd done before!

Caroling at a nursing home and outside on the busy streets of Freeport closed out the calendar in fine fashion, and put us all in the holiday mood.

We wish all our Region One friends  
**a happy,  
healthy and harmonious  
new year.**

**Sue Bonior**

---

## Valley Chords

The Valley Chords have been busy singing! Some of our venues include: Our National Anthem at Dartmouth hockey games and women's basketball games, (lots of potential singers in the audience!) and a NH Fisher Cats game! Holiday performances at the Gingerbread Festival, LaSalette Festival of Lights, and six visits to nursing home and assisted living facilities. The Valley Chords have dedicated members who donated their time (and their goods!) for Labor Day Yard Sale to benefit the Chorus. It's become a tradition that has also been a chance to sing and introduce women shoppers to barbershop.

Also hosted a Fall Fling Open House, entertainment by Zazzle, (our director's award winning quartet), and welcomed more than a dozen visitors, including prospective and former members. From that we have two potential members who joined us for singing through the holiday season.



### Oh - I Love Lucy (but that witch is scary)!

We were also surprised to have "Lucille Ball" and her "father" crash our Halloween party.

Julia O'Hara

## Valley Chords



## Singing Valentines

If you will be doing Singing Valentines this year, consider registering at:

[www.singingvalentines.com](http://www.singingvalentines.com)

Although this site is maintained by Barbershop Harmony Society, they invite all Barbershoppers including Sweet Adelines to utilize their site to promote their availability to perform Singing Valentines in person and on the phone. This is a free service, a lot of fun and a good opportunity to make some money for your chorus or quartet.



## Valley Shore Acappella

By the time we read this article, it will be 2013! Wow, and we had such a busy Autumn. After the fantastic Fall Regional, we hit the floor running. Well, actually singing. That's what we all love to do, right? In October, VSA put our interval training to work with some new and innovative music. It was inspiring to know that barbershop has broken down "musical walls" and encouraged young people to try singing in harmony. There is so much new talent to draw from in acappella music. We loved finding new songs to sing in 4-part harmony.

We had planned a Halloween Extravaganza party for Oct. 31. Storm Sandy intervened and we all hunkered down to wait it out. After checking with all our families, we were fortunate not to suffer too badly. We lost power for days but came through with only some physical damage. Many of our members helped their neighbors and there was lots of "generator sharing" once someone got power! Like many communities, we went on with our postponed lives and held our party a week later. Sometimes, the best way to go on is just to go on and live your life. With the kind of friends that we have in Sweet Adelines, it's an easy thing to

do. Singing is sweet therapy!

Before we knew it, the Holiday season was upon us. We spent some time reviewing or Christmas classics. This time, of course, we used our interval knowledge that our illustrious leader, Steve Wolf, has painstakingly drilled in us. Some of the old carols sounded "new" again. We had a great group of gigs to try them out. We started with the "Festival of Trees" at the Wadsworth Athenaeum in Hartford. It's an incredible display of Christmas and Hanukkah trees decorated with various themes and for sale! We had a great time strolling the halls and singing for different groups. We also had a great time at the historic Gillette's Castle. It's an amazing stone castle sitting by the Connecticut River. We loved singing "Jingle Bell Rock" by their 20 ft. tree. We also sang for a women's group Christmas party. That definitely inspired us to have our own party directly after that gig. As I'm sure you know, we Sweet Adelines love to party. Needless to say, we had a great time toasting each other and our wonderful season.

After the tragedy that took place in Newtown, we came together like many communities did, and sang at the Higganum Vigil on their town green. There was an

outpouring of love and community that transcended the evil. It was a night of remembrance and the lighting of candles for the souls that were taken from us all. May we never forget.

We wish all our fellow choruses and quartets the happiest of New Year's and the best of harmony. We hope to see all of you in Newton, MA. on Jan. 25-27th, 2013.

**Marylou Zinser**

## Quarter Notes

For the next and subsequent issues of Tags & Swipes I would like to start a section to highlight the wonderful Quartets we have in Region 1. If you would like to share your Quartet news with us, please contact me. I envision that you will have all sorts of interesting stories to tell us about your coaching, performances, how you got started, the new member you just got for your Quartet, etc.

**Pat Marais - Editor - marais9@msn.com**

## Let's Shout from the Highest Mountain

Region 1 competitors were tops in Denver and we are so proud of you!

### Congratulations!

Harmony on the Sound - 15th Place  
Boston Accent - 30th Place

For Full 2012 International Results - visit:

<http://www.sweetadelineintl.org/index.cfm?id=331>





# Regional Faculty

## Norma's Nuances

Norma Murray



### The Eb Scale

Wouldn't you like to pick up a piece of music and be able to sight read it? With a little bit of knowledge and some practice,

everyone can do it!

Once you know the key of the song (which note to play on the pitch pipe), what the note names are and how they correlate to do-re-mi (remember "The Sound of Music?" then you can begin reading on your own.

We'll start with the key of Eb as many Sweet Adeline arrangements are in this key.

At the beginning of the staff, you will see 3 flats. Theory lessons will tell you that this is the key of Eb and every B, E and A must be flattened in this song.

The notes in the Eb scale are:  
Eb, F, G, Ab, Bb, C, D and Eb.

If you were to sing them, you could use numbers 1-2-3-4-5-6-7-8

Eb F G Ab Bb C D Eb  
1 2 3 4 5 6 7 8  
OR do re mi fa sol la ti do



### Eb Scale

### E Flat Major Scale

### Grand Staff / Keyboard Correlation Chart

www.JonMutchler.com  
P.O. Box 1834, Ferndale, WA 98248

## Staying Connected...

Name	URL	Description
Sweet Adelines International	<a href="http://www.sweetadelineintl.org/">http://www.sweetadelineintl.org/</a>	The public side of our International Site - there is also a Members Only side that you must register on the site to access.
Region 1	<a href="http://www.sai-region1.org/">http://www.sai-region1.org/</a>	The public side of our Regional website - there is also a Members Only side that you must register on the site to access.
SweetAdelinesInt	<a href="http://launch.groups.yahoo.com/group/SweetAdelinesInt/">http://launch.groups.yahoo.com/group/SweetAdelinesInt/</a>	A Yahoo Discussion group for Sweet Adelines and fans - currently 3522 members - you must "Join This Group" before you can read the discussion messages (also you must first sign up for a Yahoo account before you can join any of their Discussion groups - go to <a href="http://www.yahoo.com/">http://www.yahoo.com/</a>
SAlregion1	<a href="http://launch.groups.yahoo.com/group/SAlregion1/">http://launch.groups.yahoo.com/group/SAlregion1/</a>	A Yahoo Discussion group for our Region 1 members and fans. As in anything on the Internet - beware of phishing scams such as the one posted there on Jan 16, 2013.
Region 1 Sweet Adelines	<a href="http://www.facebook.com/pages/Region-1-Sweet-Adelines/173084668423">http://www.facebook.com/pages/Region-1-Sweet-Adelines/173084668423</a>	A Facebook site for Region 1 - currently 431 members - you must sign up for Facebook to make comments
Meetup.com	<a href="http://www.meetup.com/Rhythm-of-New-Hampshire-Show-Chorus/">http://www.meetup.com/Rhythm-of-New-Hampshire-Show-Chorus/</a>	Example of a meetup.com site used by Rhythm of New Hampshire for marketing purposes that you can use for your chorus - also see Merrimack Valley Chorus and Poast Road Chorus for good examples too

### Thank You Susan Jones



Susan has been editor of Tags & Swipes for the past 5 years and we appreciate all that she has done to keep Region 1 connected to what is going on both on a Regional and International level for our members. For every edition she has issued, we have been kept informed in a timely, consistent manner and as she passes the baton on to me as new editor of Tags and Swipes, I hope that I can learn from her example and continue to keep Tags & Swipes a newsletter that the Region will find interesting and informative.



Pat Marais - Editor

Region 1 Choruses

Chorus	Director	City, State/Prov.
The Greater Montreal Chorus	Heather Solomon	Westmont, QC
West Island Chorus	Tracey Larder	Pointe Claire, QC
Farmington Valley Chorus	Cheryl Wilcox	Simsbury, CT
Harmony on the Sound Chorus	Karen Sweeters	Trumbull, CT
Millinnium Magic Chorus	"under our own direction"	Manchester, CT
Sound of New England Chorus	Marion Devokaitis	Bloomfield, CT
Valley Shore Chorus	Steven Wolf	Middletown, CT
Berkshire Hills Chorus	TBA	Piitsfield, MA
Coastline Show Chorus	Gail Jencik	South Attleboro, MA
Cranberry Shores Chorus	Dee Pelletier	Hyannis, MA
Harborlight Show Chorus	TBA	Peabody, MA
Heart of the Valley Chorus	Maggie Hawlicheck	Florence, MA
Island Grove Chorus	Pat Hoitt	Abington, MA
Liberty Belle Chorus	Barbara Braxten	Arlington, MA
Merrimack Valley Chorus	Eileen Goe	Wilmington, MA
MetroWest Harmony Chorus	Julie Jeffery	Marlborough, MA
Post Road Chorus	Norma Ford	Worcester, MA
Heart of Maine Chorus	Sherry Sprague	Bangor, ME
Mollockett Chorus	Wanda Foss	Oxford, ME
Royal River Chorus	Wendi McPike	Westbrook, ME
Profile Chorus	Terry Neill	Manchester, NH
Rhythm of New Hampshire Show Chorus	Jessie Oslán	Derry, NH
Champlain Valley Chorus	Cherie LaDuke	Plattsburgh, NY
Valley Chords Chorus	Laura Fraser	Hartford, VT

**MARK YOUR CALENDAR**

**January 25-27, 2013**

**Winter Regional Weekend  
at the Boston NewtonMarriott  
Newton, MA with Dede Nibler**

**April 25-28, 2013**

**Regional Competition  
Springfield, MA**



**September 27-29, 2013**

**Fall Regional Weekend  
at the Courtyard by Marriott  
Nashua, NH with Sandy Marron  
and Judy Potzgay**

*Check the Region 1 website for  
Updates and Additions  
<http://sai-region1.org>*

**Advertise in Tags & Swipes**

Published 3 times/year.

Prices:

Full page \$125

3/4 page \$100

1/2 page \$75

1/4 page or smaller \$45

Checks payable to:  
N.A. Region One

Mail to:  
Ruth Widerski  
28 Watertown St.  
Lexington, MA 02421

E-mail ad to editor Pat Marais:  
[marais9@msn.com](mailto:marais9@msn.com)

**Copy Deadline**

**The Spring Edition of Tags & Swipes will be issued at the end of April prior to Competition.**

**Please email copy to: [marais9@msn.com](mailto:marais9@msn.com) no later than **April 7, 2013.****

**Please attach photos to email rather than inserting into copy.**

**Photos will be used as space allows.**